

# BRUSHING

## Customer expectations for new right-of-way development

Updated September 2025

In order to maintain a safe, reliable power supply and reduce the risk of wildfires, FortisAlberta and their customers both play important roles in ensuring lines remain clear of debris. Here are some things to keep in mind:



### Where can I brush or clear vegetation?

You can only brush or clear vegetation on land that you own. You cannot complete brushing on road allowance, crown land, or your neighbour's land. In these cases, we are happy to help.

### Legislative and regulatory responsibilities to be aware of

Property owners must comply with all federal, provincial, and municipal legislation, regulations, acts and bylaws as applicable. These include (but are not limited to): Alberta's Water Act, the Alberta Historical Resources Act, Alberta Wildlife Act, and the Migratory Bird Convention Act. The customer should also minimize potential adverse effects to wildlife and habitats that may result from brushing.

### What if there are powerlines already on my land?

For work within 7 metres of an overhead power line, please contact us at **310-WIRE** (9473) for an overhead orientation.



## For your final site presentation

- All vegetation must be removed up to and including the trees that have been ribboned or painted. Clearance standards are considered to be 'ground-to-sky'. No tree(s) or any part of their stem or canopy will be within 6 - 7.5 metres pending power line voltage.
- In addition to our standard clearances from the right-of-way, the customer and or their contractor must also review the immediate area adjacent to or outside the power line right-of-way for any dead, declining, or hazardous trees that could fall and contact power line equipment.
- FortisAlberta standards call for the cutting of stumps as low and flat to the ground as possible, with stumps being no higher than ankle height (10 centimetres or 4 inches).
- All debris must be removed from the right-of-way. This includes branches, limbs, and firewood. Please remember that FortisAlberta and our contractors must be able to safely access the area to install, operate and maintain the power line as required.
- Not only does the right-of-way need to be cleared of vegetation, but a path to the right-of-way will also need to be established.



## Communication requirements for customer brushing

The Projects team's responsibility is to provide [customerbrushing@fortisalberta.com](mailto:customerbrushing@fortisalberta.com) with the following:

**Contact information** (name, phone and email)

**Legal land description and/or address**

**Project work order number and CRM number** (supplied by FortisAlberta representative)

**Project location map or a Pole FID** at the point of connection (supplied by FortisAlberta representative)

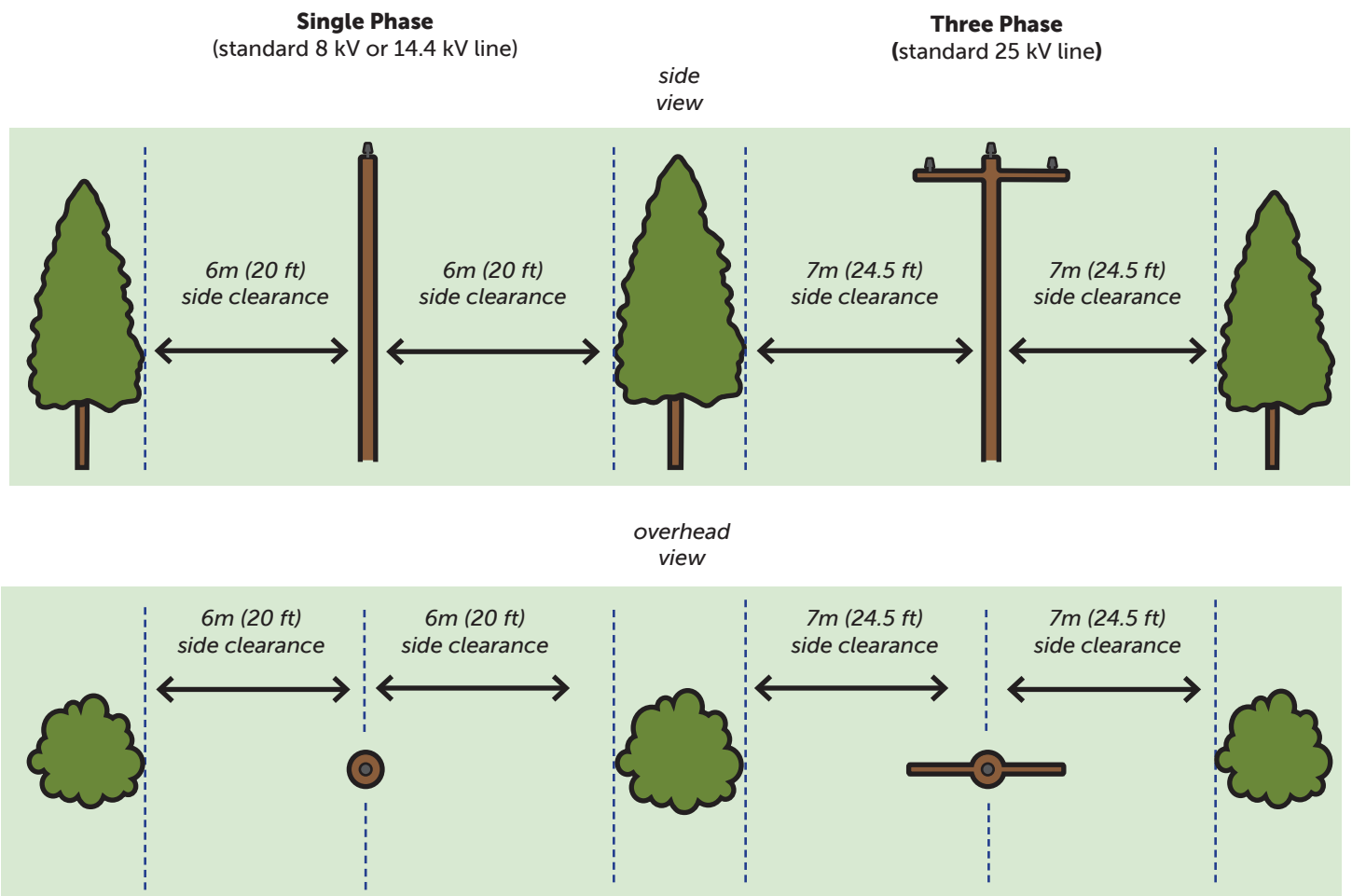
Field Scheduling will contact the customer to confirm brushing is complete to standards. This is part of the construction readiness process. **The customer is to provide site pictures that show appropriate brushing clearances achieved.**

As part of our Integrated Vegetation Management Plan, we generally follow up with a herbicide treatment. By targeting tall growing species, we can allow compatible vegetation to establish underneath the powerline. Please advise in your email if you have any objections to FortisAlberta completing this work.

## What if my work doesn't meet the standards?

If FortisAlberta must send out a local team to complete the work to our standards, you may be financially responsible, in which case we will let you know. Once payment is received, **FortisAlberta will schedule the work required and mobilize a crew.**

Our standards require these clearing distances to be maintained:



## Can I re-plant vegetation once the powerline is built?

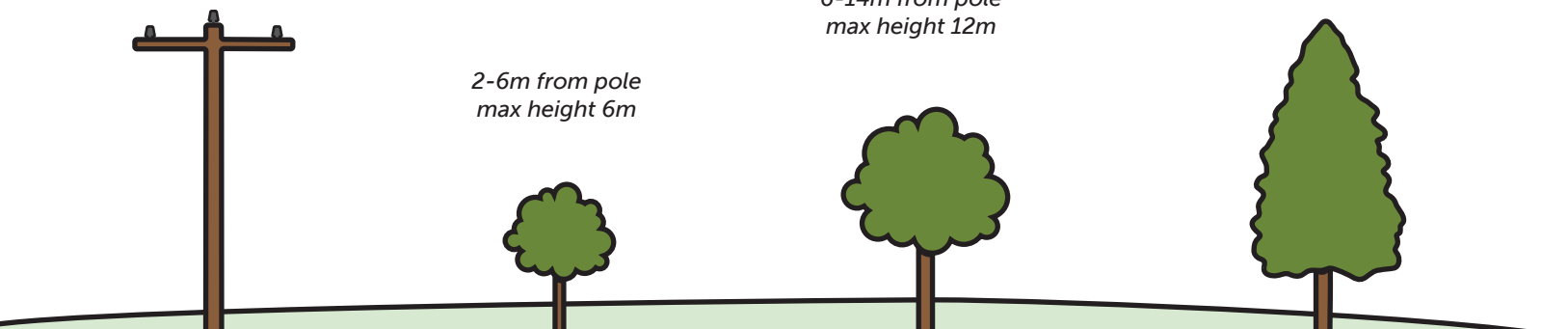
Yes, but be mindful of the selection of vegetation planted near a powerline. To keep power lines clear, tall-growing trees like pine, spruce, poplar and willow should never be planted within a distance equal to their mature height from power lines. This is to ensure the safe and reliable operation of the powerline. **Right Tree, Right Place.**

<2m from pole  
no planting

>14m from pole  
any height

2-6m from pole  
max height 6m

6-14m from pole  
max height 12m





The line that connects us all