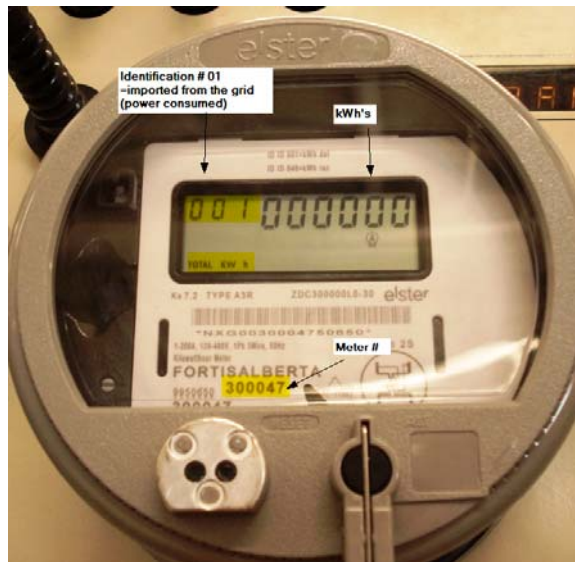
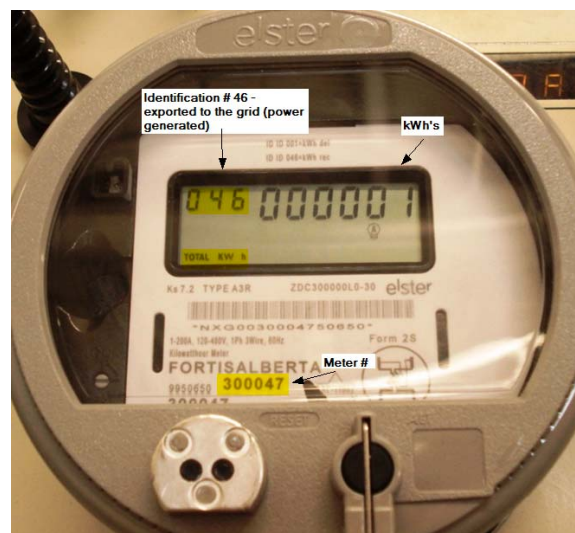


What does a bi-directional meter look like?

- There will be two displays; kilowatt hours (kWh) delivered and kWh received
- Both displays will have a *Total kWh* displayed in the lower left hand corner
- The flow of energy in the meter can be determined by watching the disk emulator located at the bottom of the LCD display
- When the identification on the left of the screen is 01, the main number displayed will be the imported kWh from the grid, so power the customer has consumed.



- When the identification number on the left of the screen is 46, the main number displayed will be imported kWh to the grid, so the power the customer is exporting to the grid



- When the identification number is 888, this is a segment check test