

FortisAlberta in the Community

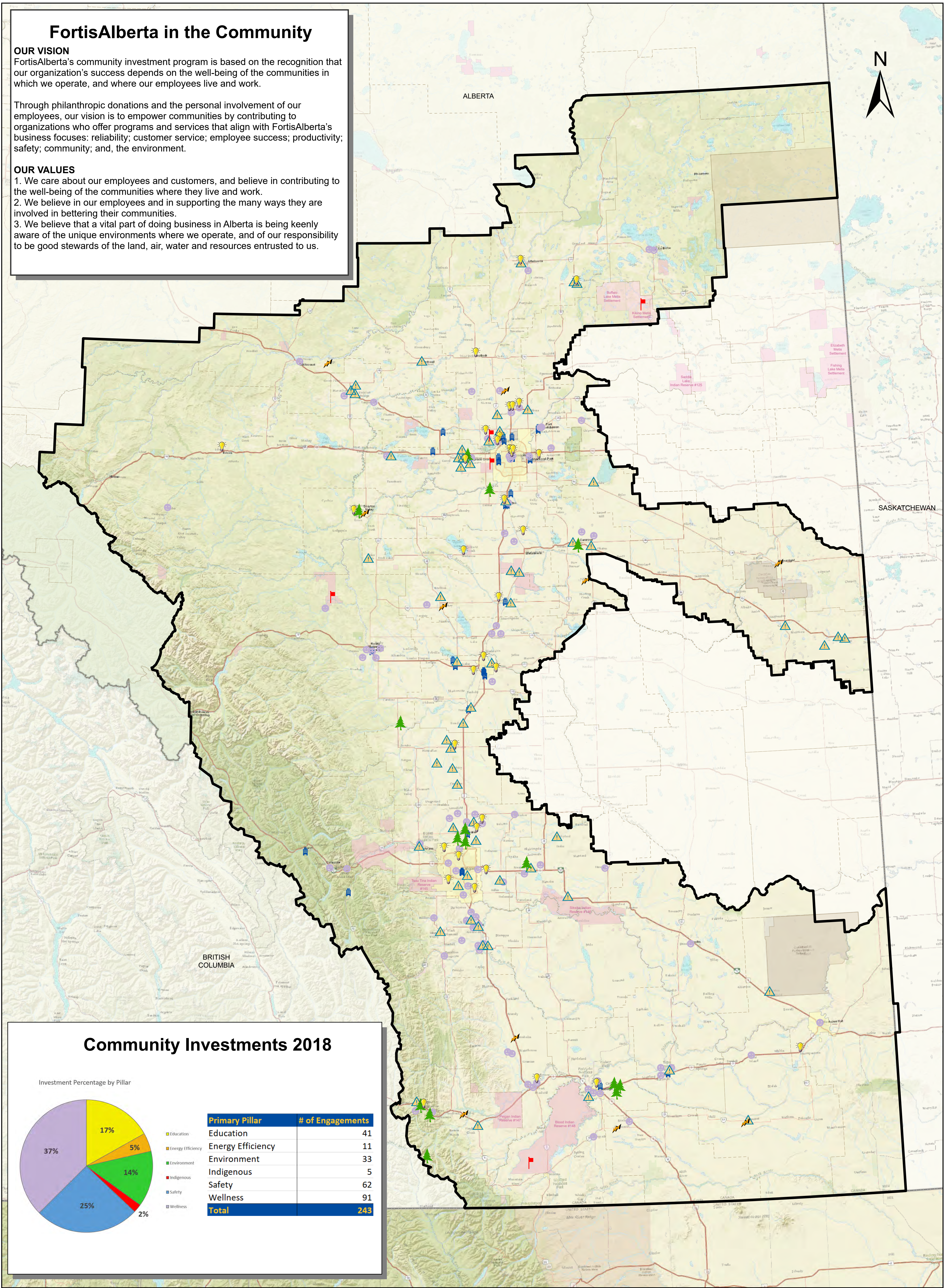
OUR VISION

FortisAlberta's community investment program is based on the recognition that our organization's success depends on the well-being of the communities in which we operate, and where our employees live and work.

Through philanthropic donations and the personal involvement of our employees, our vision is to empower communities by contributing to organizations who offer programs and services that align with FortisAlberta's business focuses: reliability; customer service; employee success; productivity; safety; community; and, the environment.

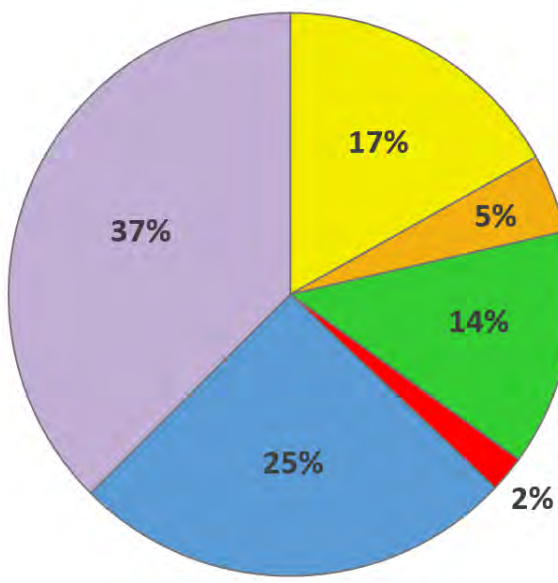
OUR VALUES

- 1. We care about our employees and customers, and believe in contributing to the well-being of the communities where they live and work.
- 2. We believe in our employees and in supporting the many ways they are involved in bettering their communities.
- 3. We believe that a vital part of doing business in Alberta is being keenly aware of the unique environments where we operate, and of our responsibility to be good stewards of the land, air, water and resources entrusted to us.



Community Investments 2018

Investment Percentage by Pillar



Primary Pillar	# of Engagements
Education	41
Energy Efficiency	11
Environment	33
Indigenous	5
Safety	62
Wellness	91
Total	243

Legend

Investment Pillar



Education

Literacy, leadership, and organizations with learning disabilities.



Energy Efficiency

Supporting municipalities including schools and businesses within its service territory with energy efficiency initiatives, including Green Up Grants and Save Energy Grants.



Environment

Environmental sustainability, specifically those causes directed at birds and trees.



Indigenous

Our work in the aboriginal communities we serve, including Pow Wows, Rodeos, scholarships and celebrations.



Safety

Incident prevention and emergency response and electrical safety education ZAP.

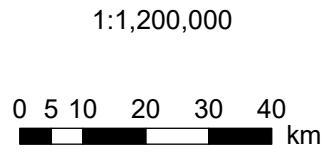


Wellness

Programs to raise awareness and research dollars about causes important to our customers and employees.



Business Events



Fortis10TM, Transverse Mercator, WGS 1984



FortisAlberta Inc.

Community Investments

Map Date: 5/29/2019

Created By: AMAGUIAR

Checked By: LTAYLOR

Approved By: SSTEWARD

This map is for illustrative purposes only and may not be an exact representation of the data shown. FortisAlberta makes no representation or warranty, express or implied, with regard to the correctness, accuracy or reliability of the map and data. Users of this map are responsible for any and all interpretations made and FortisAlberta assumes no liability respecting any use whatsoever of this map. This map may not be reproduced or distributed, in any form, without the prior written consent of FortisAlberta.