

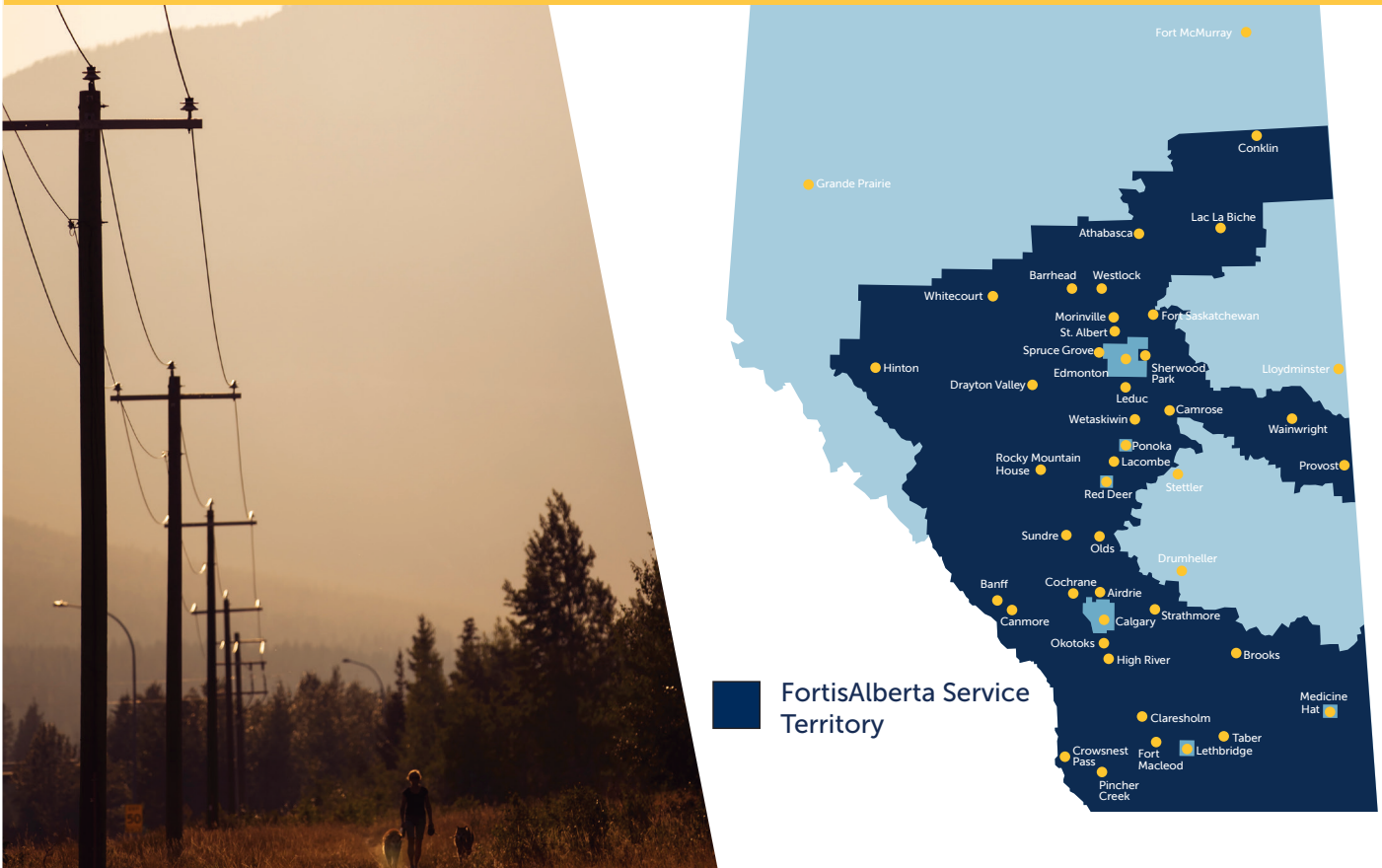
### FortisAlberta's Contribution Program

is intended to offset customers' costs for new or upgraded electric distribution services. Many factors are taken into consideration when establishing an investment contribution such as the realistic technical life of services, customers' operations, an expectation of a certain level of revenue every year for the life of the service and the minimum investment term to cover the full construction cost of customers' services. If the cost is greater than the maximum investment, customers are obligated to pay a contribution toward the service.

The following table provides a list of services coupled with FortisAlberta's maximum investment levels.

Type of Service	2022 Maximum Investment Levels (effective January 1, 2022)
Rate 11 Residential	\$2,677 per service
Rate 11 Residential Development	\$2,677 per service, less FortisAlberta's costs of metering and final connection
Rate 21 & 22 (Farm) and Rate 23 (Grain Drying - Closed)	\$6,072 base investment, plus \$869 per kVA of Peak Demand
Rate 26 (Irrigation)	\$6,072 base investment, plus \$966 per kW of Peak Demand
Rate 38 (Yard Lighting)	\$864 per fixture
Rate 31 Street Lighting (Investment Option)	\$3,125 per fixture
Rate 41 (Small General Service)	\$6,072 base investment, plus \$966 per kW of Peak Demand
Rate 45 (Oil and Gas Service)	\$6,072 base investment, plus \$966 per kW of Peak Demand FortisAlberta invests as required per unmetered to metered service conversion program.
Rate 61 General Service (less than or equal to 2 MW)	\$6,072 base investment, plus \$966 per kW for the first 150 kW, plus \$121 for additional kW of Peak Demand
Rate 63 Large General Service (over 2 MW) Distribution Connected	\$109 per kW of Peak Demand, plus \$120 per metre of Customer Extension

As owner and operator of more than 60 per cent of Alberta's total electricity distribution network, FortisAlberta's focus is delivering safe and reliable electricity to more than half a million residential, farm and business customers. The company employs more than 1,100 Albertans and serves more than 240 communities with 124,000 kilometres of distribution power lines across Alberta.



FortisAlberta delivers power to homes, farms and businesses across central and southern Alberta, but we don't work alone. We are the first point of contact for you to connect your new electricity service; however, there are many players in the overall system who make sure the power is there when you need it. Here's an overview of the different players.

