

Lightning Safety

If you know a storm is coming, it's best to unplug electronics and stay indoors, away from anything that conducts electricity.



Seek shelter in low-lying areas but look out for flooding



You're safe in a car but don't park under trees or power lines



Disconnect electronics and electrical appliances including radios and television sets

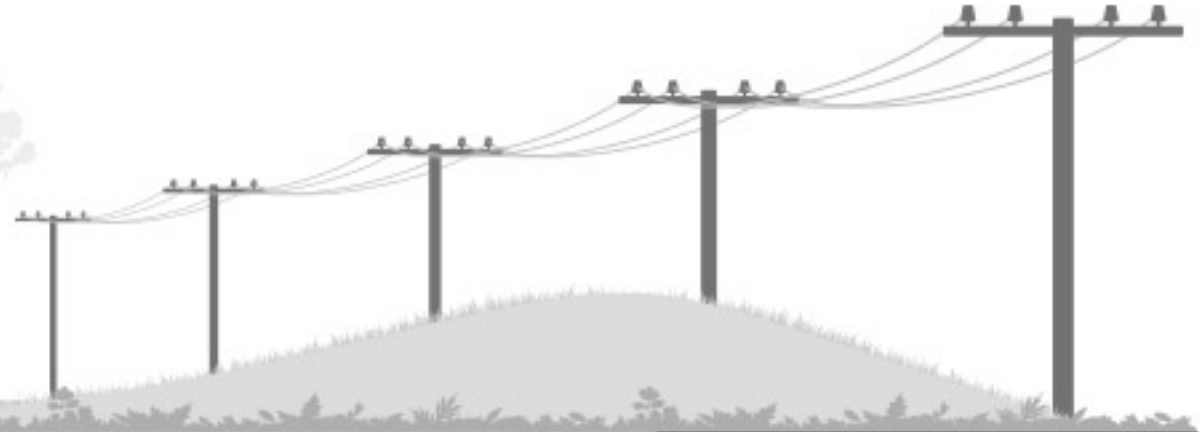
Stay away from anything metal like fences, tractors or golf carts



Stay away from bodies of water including pools and puddles



Stay away from tall objects and high elevations like trees, hilltops and poles



Take shelter if you count

30 seconds or less

between lightning and thunder

Report emergencies with your cell phone:

310-WIRE (9473)

1-866-717-3113

FORTIS
ALBERTA